

# TITLE OF PAPER (TIMES ROMAN 18, BOLD)

## LINE 2 OF TITLE

*A.N. Other<sup>1</sup>, B.N. Other<sup>2</sup> and C.N. Other<sup>3</sup> (Times Roman 14 Ital Bold)*

<sup>1</sup>*Organisation 1 (Times Roman 12 Ital, Bold)*

<sup>2</sup>*Organisation 2*

<sup>3</sup>*Organisation 3*

[lead.author@organisation.ac.uk](mailto:lead.author@organisation.ac.uk)

### Abstract

The present paper deals with the format of ETMM8 manuscripts. The length of the manuscript must not exceed **6 pages**. The deadline for submission is **20<sup>th</sup> March 2010**. Information on uploading is given at the end of Section 1.

### 1 Introduction

ETMM8 papers are to be prepared in a two-column, single-space format. The typeface is Times Roman 10 pts. Margins are: 25 mm on all four sides. Pages should not be numbered.

Sections should be numbered, except for the Abstract, References and Acknowledgements. Section titles should be in Times Roman 12 pts. Bold. Paragraphs should be indented. The text in columns should be both left and right justified.

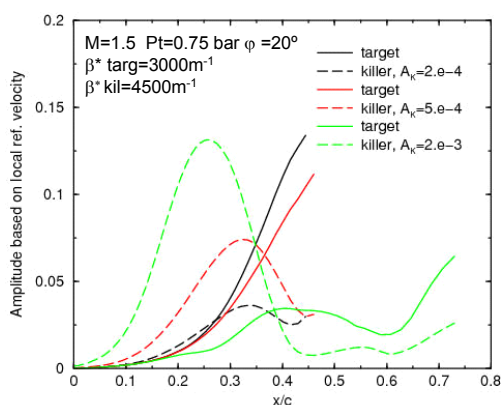


Figure 1: Example of a plot.

Figures are to be inserted as illustrated by Figures 1 and 2 below. The best approach is to insert figures into tables, as is shown below, but the table boundaries should not appear in the actual paper (this can be controlled with the *Borders and Shading* function in the *Tables* menu).

Care should be taken with colours as papers will be printed in black and white, in addition to being issued on a CDR.

Publications should be referred to in the text by authors' surnames and year of publication in brack-

ets, e.g. Smith and Martin (1997) and Jones et al (2002). The list of references should be alphabetical.

When the paper is to be uploaded (in .pdf format only), the following file designation should be chosen: **ETMM8\_authname.pdf**, where "authname" is the name of the first author. **The size of the file must not exceed 5 MB.**

Authors should note Copyright statements made on the ETMM8 Website. In particular, by uploading their manuscripts, authors agree to the manuscripts being included in the paper and CDR proceedings. Otherwise, authors retain Copyright.

### 2 Mathematical formulation

Formulae should be inserted in standard scientific notation and typeface, centred in columns, as illustrated below.

$$\bar{R}^* = W_e \left( \frac{dU_e}{dS} v \right)^{-1/2} \quad (1)$$

where symbols are to be defined. For example,  $\bar{R}^*$  is a parameter, and Equation (1) is valid for an edge angle of  $\phi \geq 60^\circ$ .

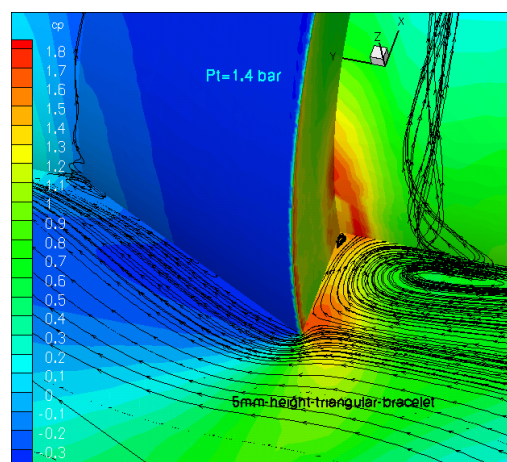


Figure 2: Example of embedded picture.

### **3 Conclusions**

The format of references is exemplified below. Journals names should be in italics, authors' surnames should precede initials and the year of publication, in brackets, should directly follow the authors' names. The titles of publications should be included.

#### **Acknowledgements**

The investigations presented in this paper have been obtained within the European research project XYZ.

#### **References**

- Jones A.B., Jordan, D.L and March, F.P. (2002), Linear aspects of transition, *J. Fluid Mech.*, Vol. 34, pp. 123-153.
- Smith, W.S. and Martin, W.P. (1997), Leading edge paper on control mechanism, AIAA Paper 97-1234.